

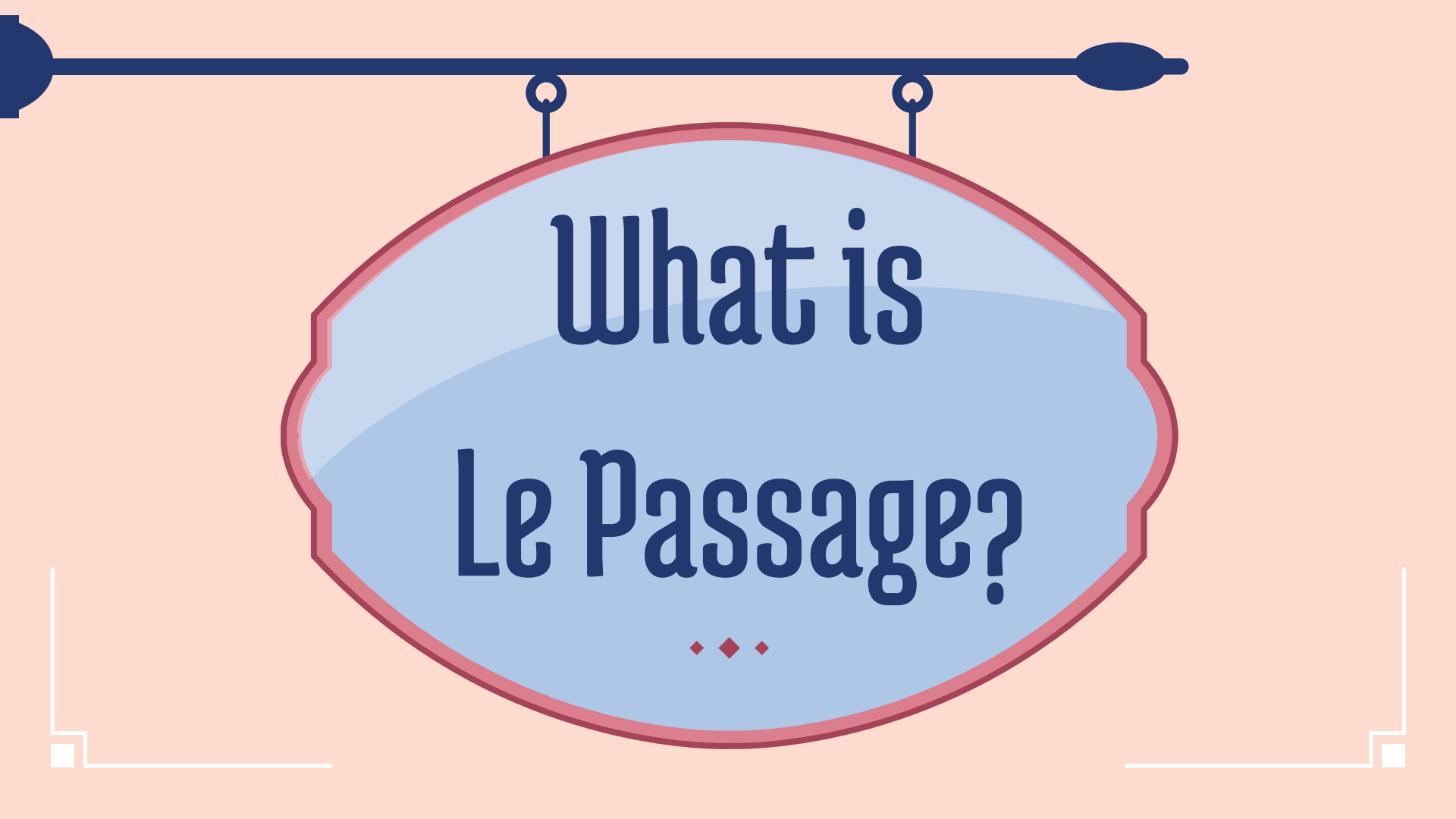
Le Passage

An International Lasallian Formation Retreat



Rebecca Burgess Mackisey & Veronica Tarrazo





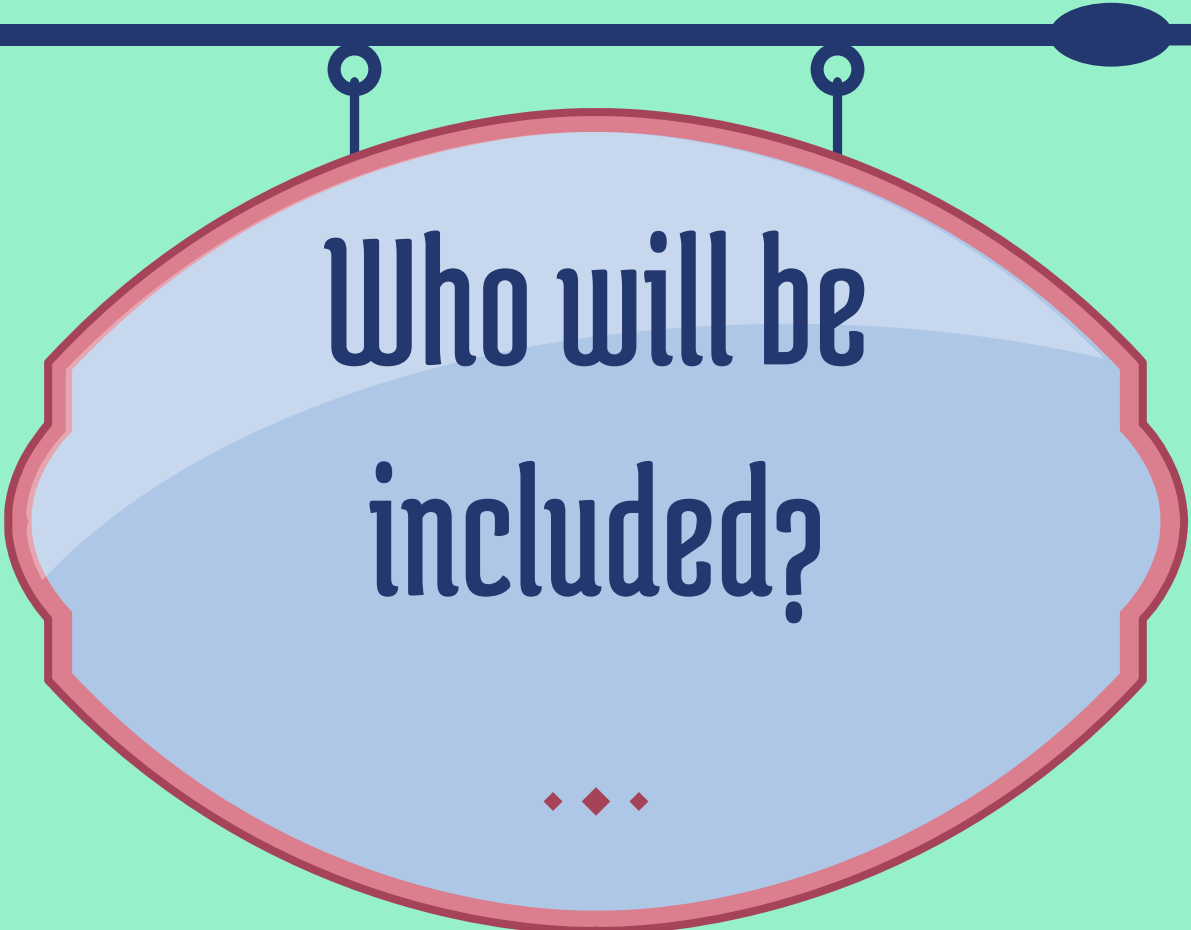
**What is
Le Passage?**



Le Passage



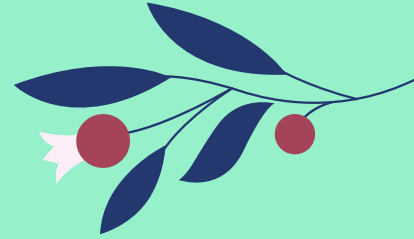
- There is a deep focus on faculty formation throughout the school year, but not much is done to intentionally form our students in deeper understanding of the life and work of St. John Baptist de La Salle.
- Create a student-centered Lasallian formation retreat to help students encounter de La Salle by following his footsteps.
- Year long process including frequent formation meetings leading up to a trip to France.
- Students will be invited to reflect on their own experiences in a Lasallian school and think about the different ways they have been invited to enter more fully into the mission.



Who will be
included?

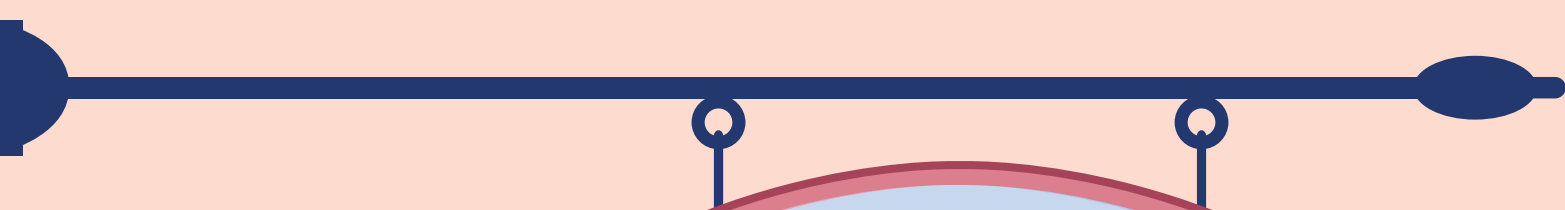
◆ ◆ ◆

Le Passage



- Maximum of 12 students in attendance.
- Formal application process for students
 - Applications will be submitted in early fall of Junior year
 - Students selected in September.
 - Monthly formation meetings will begin in October
 - Total of eight meetings
 - Pilgrimage in June at the end of the academic year.





How will the program be structured?

Timeline of meetings, topics, and goals
to prepare for pilgrimage.



Le Passage

- Once students are selected for this program, participants will meet monthly to deepen their personal formation as well as deepen their understanding of the life and works of St. John Baptist de La Salle.
- The meetings, topics, and guest speakers will be as follows:

Le Passage

- October
 - **Topic:** The Encounter, Choosing to Say “Yes”
 - **Presenters:** Becca Mackisey, *Director of Campus Ministry* & Veronica Tarazzo, *Spanish and French teacher*
- November
 - **Topic:** The Life and Work of De La Salle
 - **Presenters:** Meg Dillon, *Faculty Formation Instructor*
- December
 - **Topic:** Becoming Brothers: Spreading the Message and Sharing the Work
 - **Presenters:** Br. Dennis Malloy, *President of La Salle Academy RI*
- January
 - **Topic:** The Modern Connection, Why Does This Still Matter?
 - **Guests:** Mercedes Di Mascio, *Lasallian Social Concerns Moderator*

Le Passage



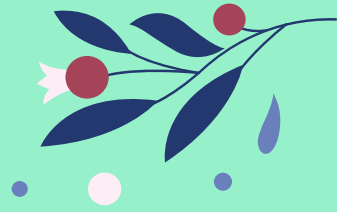
- February
 - **Topic:** What's your Why?
 - **Guests:** Brian Ciccone, *Director of Marketing*
- March
 - **Topic:** Ask a Brother
 - **Guests:** Brother J.D Macioce and Brother Steven Barbaro
- April
 - Student presentations
- May
 - Logistics and Parent Meeting



Student Presentations



Le Passage



- Students will spend the year deepening their understanding of Lasallian education and mission. From that, they will be tasked to dive deeper into a topic, subject, or aspect of our Lasallian heritage and present on it before their departure.
- They will research and reflect on their chosen topic, and present their ideas to their group members. These presentations will show their own personal interest and commitment to this formation program.
- Students may work alone or in groups of two. Before the presentation, they should submit a short reflection paper (2 pages) to the program director. They should also submit their presentations for review before they are presented.

The image features a central, light blue, vertically-oriented oval shape with a dark red border. This oval is suspended from a dark blue horizontal bar at the top by two small circular rings. The text 'Pilgrimage to France' is written in a dark blue, serif font across the center of the oval. Below the text, three small red diamonds are arranged horizontally. The background is a solid light orange color. In the bottom corners, there are white L-shaped corner brackets.

Pilgrimage to France



Le Passage

The trip to France will revolve around the life and places of importance to St. John Baptist de La Salle. Students will also take tour of major sites in France.



Sites that will be visited:

Reims: The birthplace of St. John Baptist de La Salle.

Rouen: The center of the Lasallian Institute was established here.

Liesse-Notre-Dame: De La Salle and the first brothers took their vows and made a pilgrimage to Liesse the following day. Today, the church contains many stained glass windows depicting de La Salle and the early Brothers.

Paris: De La Salle studied at St. Sulpice and later established schools in Paris.

Parmenie: Where de La Salle sought spiritual retreat and renewal.

Grenoble: Familiar to de La Salle in his later years & where he did much of his writings.



Sustainability of Program



A community approach...

We plan to hand off our program to the Lasallian Animator, who will:

- Interview and select faculty members to run a cohort each year or every other year
- Meet with cohort leaders periodically to assure program pacing and success
- Promote the program to the student body
- Review applications and select students to join the cohort





Why Le Passage?





Each day as students drive on to our campus, they pass the sign “Enter to Learn,” and when they exit they see on the reverse “Leave to Serve.”

A Lasallian education is incomplete without instilling in our students the importance of service to others.

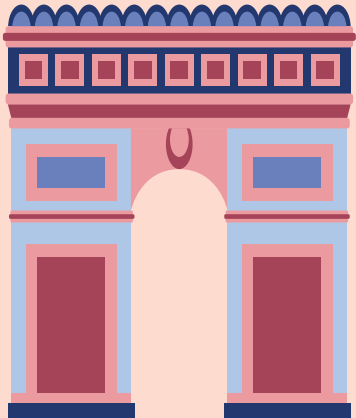
Our students should have a deeper understanding of the Lasallian faith tradition that has inspired our approach to education, and of their place in the Lasallian world.

Through this experience, they may find their own purpose and reflect on how they can better serve others and improve our shared world.

“To touch the hearts of your students is the greatest miracle you can perform.”

Med 139.3 - feast of St. Peter

—St. John Baptist de La Salle





THANKS!



CREDITS: This presentation template was created by **Slidesgo**, including icons by **Flaticon**, and infographics & images by **Freepik**

Please keep this slide for attribution